

About

This packet includes information you need to submit a complete **artwork design** and **sub-surface treatment** as part of your entry form for the Main Exhibition in the 2026 Castaways Sculpture Awards.

What's Included

- **Instructions on How to Complete an Artwork Design and Sub-surface Treatment**
- **Blank Artwork Design Template** (page 4) – optional to use, provided for convenience.
- **Example Artwork Design: With Footing** (page 5-7) – to help you understand the level of detail required.
- **Example Artwork Design: On a Plinth** (page 8) – showing an alternative presentation approach.
- **Standard Sand Anchor Detail** (page 9) – recommended footing, already certified for use.

Instructions to Complete an Artwork Design

The artwork design you submit will be used by the Curator and Selection Panel as part of the assessment process, so it is important that your submission clearly communicates your concept, materials, dimensions, construction approach, and installation method.

Once finalists are selected, the same design will form the initial documentation reviewed by the structural engineer to begin the certification process. The engineer may require additional information or adjustments, and the curator will work with finalists to refine their design as needed. However, providing a complete and detailed design from the outset will significantly reduce delays and minimise back-and-forth during certification.

The attached artwork design template (page 4) is provided to help gather the information typically required by the structural engineer. Please complete all sections as clearly and accurately as possible, as the quality and clarity of the information will directly affect the speed of assessment and certification.

You are welcome to use the blank template provided, but it is not mandatory. If you prefer to submit your own layout or format, you may do so, as long as all required information listed in the checklist below is included.

Please note:

- Final placement of artworks is determined by the Curator.
- Artwork may be installed on sand, grass, or pavement, depending on the exhibition layout.
- You should submit your design with a proposed footing, unless you intend for your work to be displayed on a plinth.

Checklist for required information on the Artwork Design

Use the below checklist to ensure that all the relevant information is provided and labelled on your artwork design.

- Artist name**
- Artwork title**
- Artist contact details** – Provide both phone number and email.
- Artwork dimensions** – Provide clear overall dimensions of the artwork (height, width, depth).
- Materials** – Clearly label all materials used in the artwork, including thickness of the materials or section size.
- Structural elements** – Identify all structural elements (frames, supports, internal armatures, etc.).
- Connections** – Show how the artwork connects to its base, plinth or anchor system.
- Fixings** – Label all fixings including bolts, welds, or mechanical connections.
- Sand level** – If your piece is being installed on sand, please include a line to indicate the sand level. Clearly show what sits above the sand and what is intended to sit below the sand.
- Installation method** – Indicate the installation method (plinth, footing/sand anchor, or other).
- Clear and legible** – Ensure drawings are legible and to approximate scale where possible.

Additional things you should consider

Initial designs with safety concerns will not be excluded, as the Castaways team will work with artists to help designs meet the required standards. Do your best to design with public safety in mind but focus more on conveying your concept initially.

Use the checklist below to assist with thinking through public safety concerns when creating your design. Design around these safety features to the best of your ability as these are the most common reasons designs are altered.

- Wind**
Can wind pass through or around my sculpture? Is it at risk of being blown over?
- Public interaction**
Is the sculpture easy to climb? If it is climbable, will it be dangerous? Do I need to consider a barrier?
- Transport**
Do I have a method to transport my sculpture?
- Durability**
Will my sculpture stay standing the entire duration of the event? Are there any parts that could fall off?
- Hazards**
Is anything on my sculpture sharp? Could anything cause injury?

Drawing Guidelines

- Provide at least one elevation view (front view of the artwork).
- Provide a plan view (top view) if the artwork has depth.
- Provide detail sketches for any complex joints or structural areas.
- Label key dimensions and materials directly on the sketch.

Final Design

Please note that finalists will be required to submit a final, fully detailed design for engineering certification, guided by the structural engineer. While this stage only applies to finalists, all entrants should provide the most complete design possible to help minimise later revisions.

Examples of Artwork Designs

This packet includes two example artwork designs to help guide the level of detail expected in your submission:

1. Example Design: Artwork with Footing (pages 5-7)

These examples show designs that include a certified footing, using the standard sand anchor commonly used at Castaways.

- Chamonix Higginson, 'Lost in Translation', 2025.
- Erica Zaino, 'hAU\$e', 2025.
- Scott Michell, 'The Hut', 2025.

2. Example Design: Artwork on a Plinth (page 8)

This example shows how to present a design intended for display on a plinth.

- Ed Staford, 'Breathe, Move, Play', 2025.

The City of Rockingham has four aluminium plinths available for artists to use. These are allocated on a first-come basis, depending on suitability and availability. If you would like your artwork to be considered for a plinth, please indicate this clearly on your design submission.

Instructions to Complete the Sub-surface Treatment

Your submission must show how the artwork will be safely anchored beneath the sand. All works in sand must include a footing or structure that extends to a **minimum depth of 1 metre** below the surface.

It is recommended to use the certified standard sand anchor (page 9), however you are also welcome to propose an alternative footing suitable for your artwork. If a new footing is proposed, please note it will be reviewed to meet certification standards and may require changes. Please ensure your drawings clearly show the type of anchor, how it connects to the artwork, and the materials involved. Providing clear and detailed information at this stage will help the Curator and structural engineer assess the feasibility of your design efficiently.

Questions

For any further questions, please contact customer@rockingham.wa.gov.au with the subject line, "Query for Castaways 2026 Entry".



Albert: 0419 945 950
albert@artforms.com.au

Artist Name

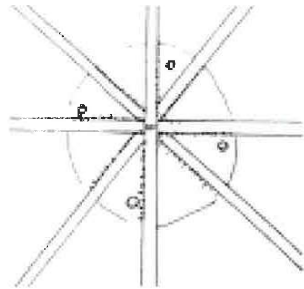
Artwork Title

Phone

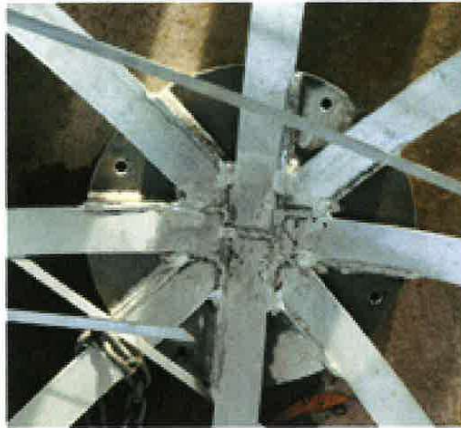
Email

DATE:

SCALE:



Base plate sketch



Welded aluminium scraps and woven IT cables

Overall size: 1440 mm H x 1220 mm W

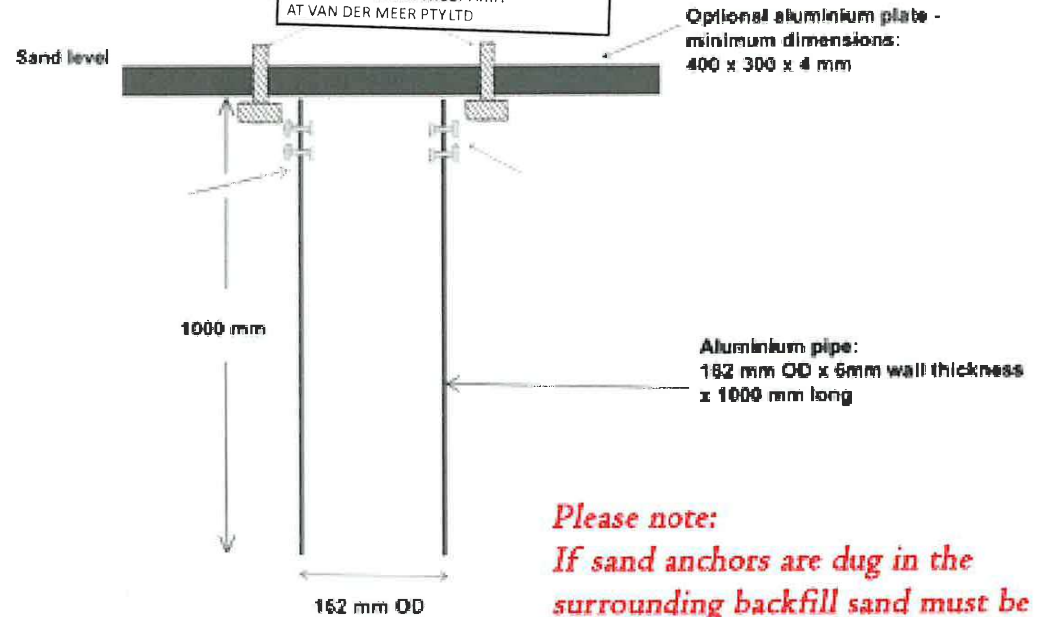
4 x 50 x 5 mm aluminium straps welded on vertical axis

1 x 50 x 5 mm aluminium strap welded on horizontal axis

Circular aluminium base plate 300 mm diameter

4 x 8 mm bolt holes at 200mm from centre to suit fixing to sand anchor

AT VAN DER MEER PTY LTD
 CONSULTING ENGINEERS
 A.T. van der Meer B.E.-M.Eng.Sc./M.I.E.
 M: 0430 239 450
 E: andrewvandermeer46@gmail.com
 AT VAN DER MEER TRUST A.T.F.
 AT VAN DER MEER PTY LTD



STANDARD SAND ANCHOR

*Please note: It is customer's responsibility to check proof thoroughly as we will cut directly from this file. We make every effort to ensure parts are correct, however AWA cannot accept responsibility for parts with incorrect details if they are cut to an approved proof.

CUSTOMER APPROVAL



TITLE: *Lost in Translation*

CLIENT: *Castaways - Chamonix Higginson*

PHONE: Albert: 0419945950
 Carel: 0404915320

EMAIL: albert@artforms.com.au
 carol@artforms.com.au

DRN:

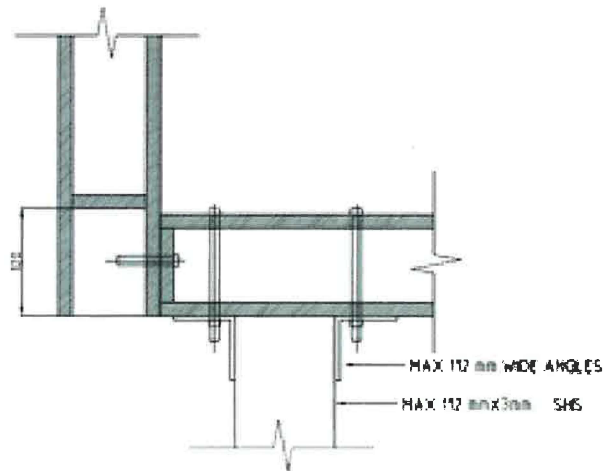
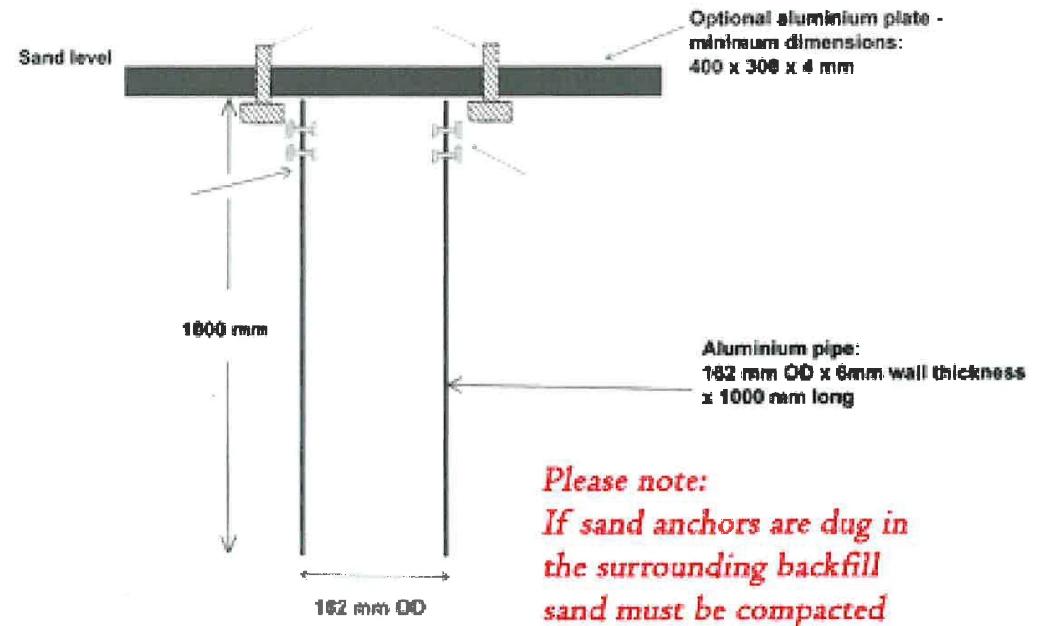
DATE: 27/08/25

SCALE:



Child's bed frame clad in mirrored acrylic.
 SHS MDF 11 mm wall thickness
 Recommend 2 x diagonally opposed standard sand anchors
 Bolts must be 8mm stainless or grade 8 steel with Nyloc nuts

AT VAN DER MEER PTY LTD
 CONSULTING ENGINEERS
 A.T. van der Meer B.E. M.Eng. Sc. M.I.E.
 M: 0430 239 450
 E: andrewvandermeer46@gmail.com
 28/8/25
 AT VAN DER MEER TRUST A.T.F.
 AT VAN DER MEER PTY LTD



STANDARD SAND ANCHOR

*Please note: It is customer's responsibility to check proof thoroughly as we will cut directly from this file. We make every effort to ensure parts are correct, however ANA cannot accept responsibility for parts with incorrect details if they are cut to an approved proof

CUSTOMER
 APPROVAL

ARTFORMS

TITLE: *Hause*

DRN:

CLIENT: *Castaways - Erica Zaino*

DATE: 27/08/25

PHONE: Albert: 049945950
 Carol: 0404015320

EMAIL: albert@artforms.com.au
 carol@artforms.com.au

SCALE:

We believe that the surfboard is to be fixed permanently to the hut.
It should be either welded or fixed with 8 mm fixings.

Mounted on 4 x standard sand anchors - one to each corner.

AT VAN DER MEER PTY LTD
CONSULTING ENGINEERS

A.T. van der Meer B.E., M.Eng., Sc. M.I.E.

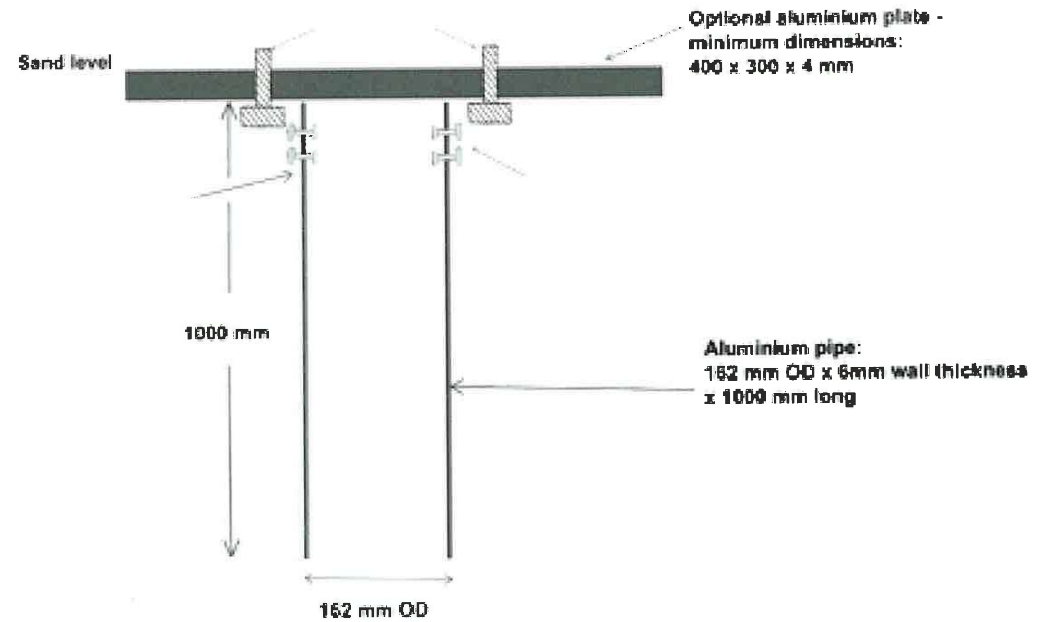
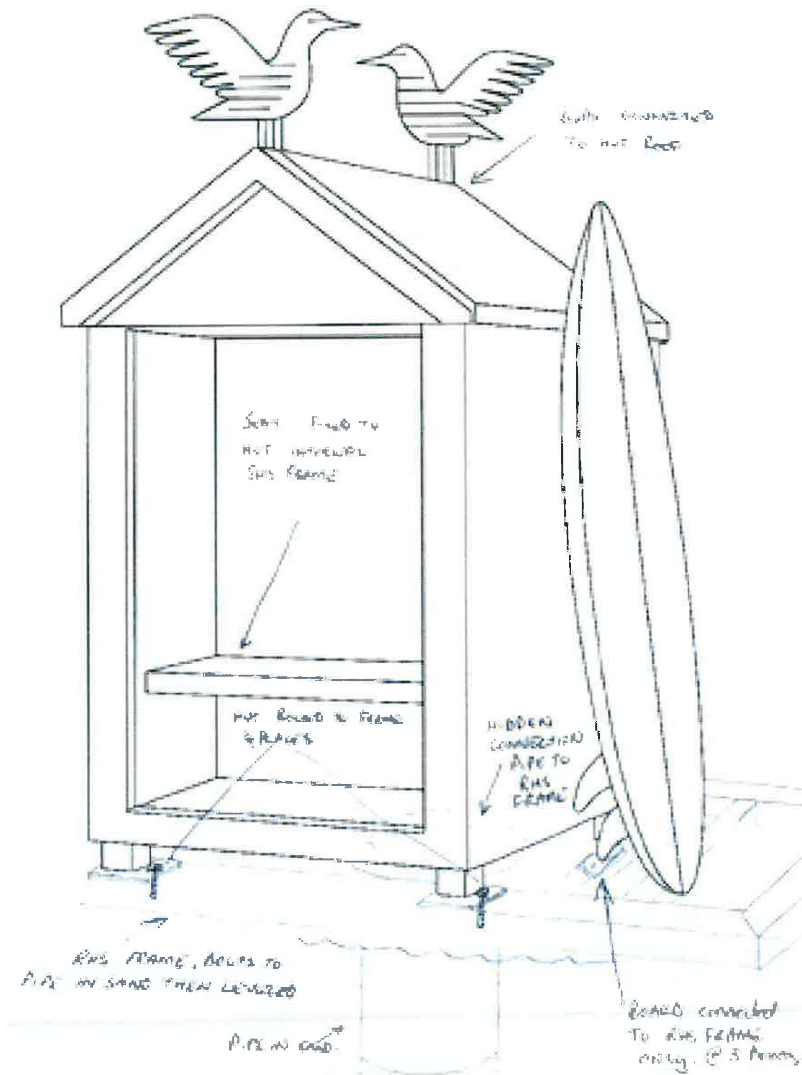
M: 0430 239 450

E: andrewvandermeer46@gmail.com

AT VAN DER MEER TRUST A.T.F.

AT VAN DER MEER PTY LTD

28/8/25



STANDARD SAND ANCHOR

*Please note: It is customer's responsibility to check proof thoroughly as we will cut directly from this file. We make every effort to ensure parts are correct, however AWA cannot accept responsibility for parts with incorrect details. If they are cut to an approved proof.

CUSTOMER
APPROVAL

ARTFORMS

TITLE: *The Hut*

CLIENT: *Castaways - Scott Michell*

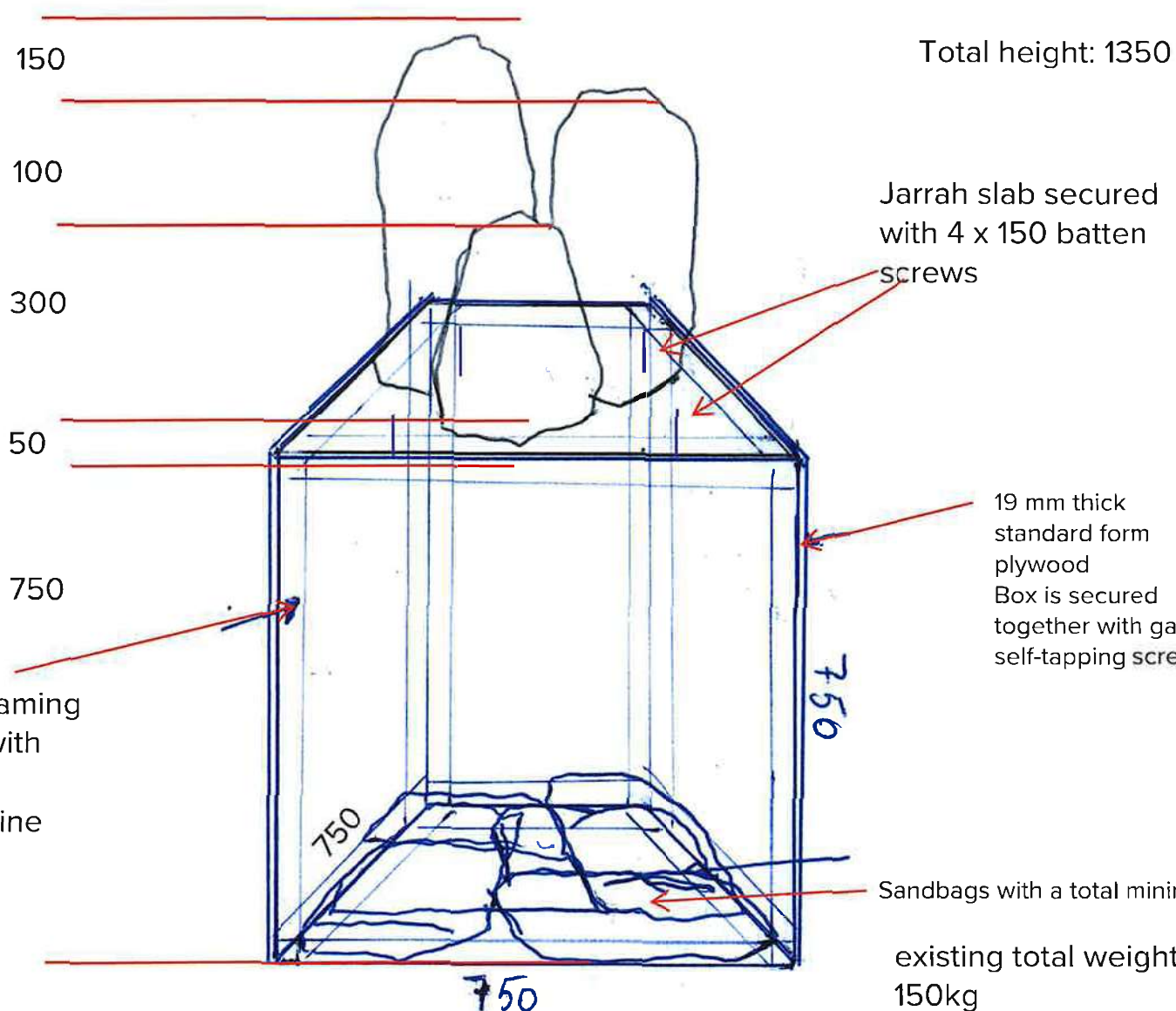
PHONE: Albert: 0410045050
Carol: 0404015320

EMAIL: albert@artforms.com.au
carol@artforms.com.au

DRN:

DATE: 20/08/25

SCALE:



Total height: 1350

Jarrah slab secured with 4 x 150 batten screws

19 mm thick standard form plywood
Box is secured together with gal self-tapping screws

Internal framing secured with 70 x 35 outdoor pine

Sandbags with a total minimum of 80 kg
existing total weight: 70kg + 80kg = 150kg



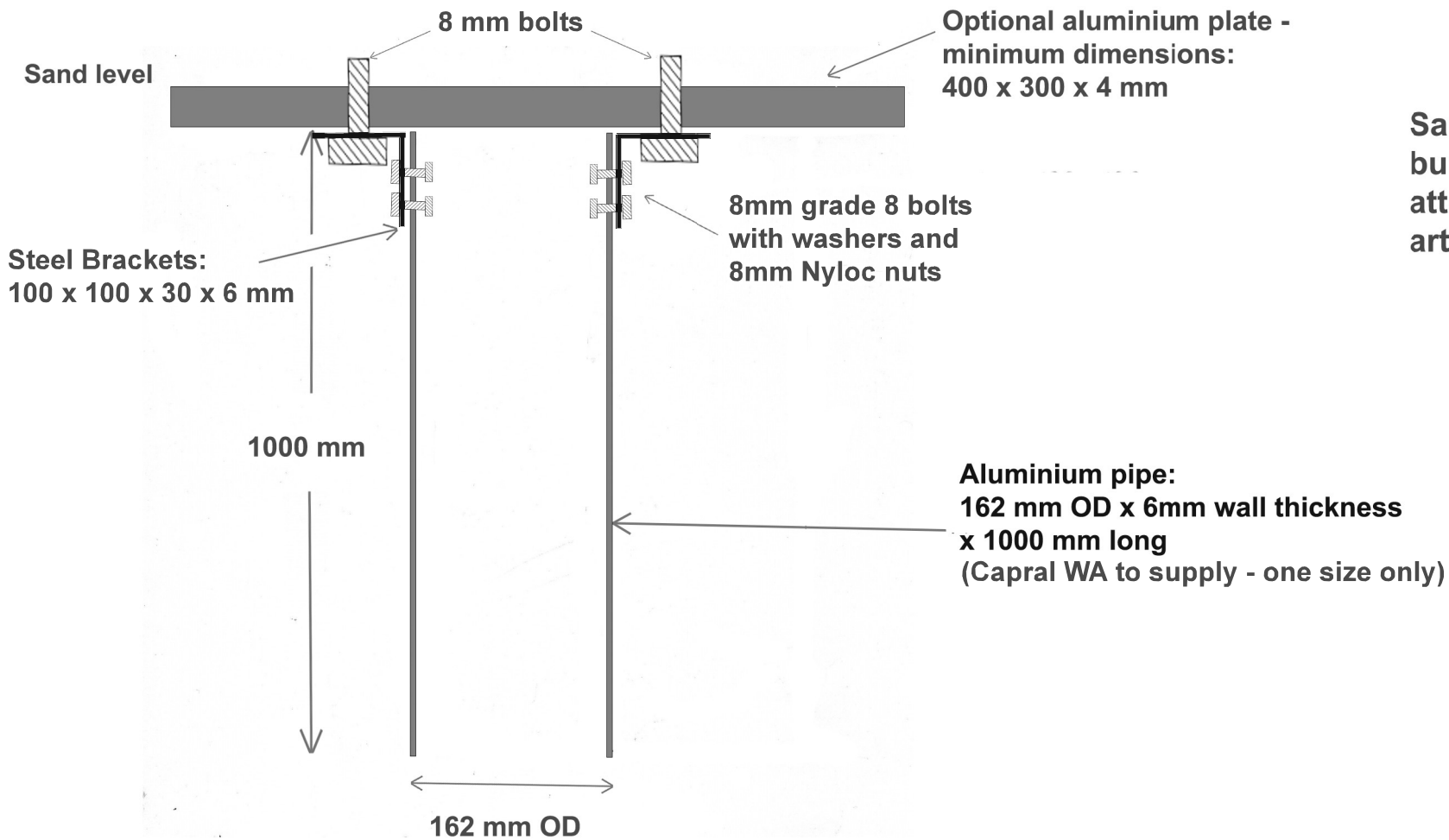
AT VAN DER MEER PTY LTD
CONSULTING ENGINEERS
A.T. van der Meer B.E. M.Eng. Sc. M.I.E.
[Signature]
M: 0430 239 450 25/9/25
E: andrewvandermeer46@gmail.com
AT VAN DER MEER TRUST A.T.F.
AT VAN DER MEER PTY LTD

*Please note: It is customer's responsibility to check proof thoroughly as we will cut directly from this file. We make every effort to ensure parts are correct, however AWA cannot accept responsibility for parts with incorrect details if they are cut to an approved proof.

CUSTOMER APPROVAL



TITLE: Ed Stafford: Breathe, Move, Play	DRN: Artforms
CLIENT: Castaways	DATE: 01/08/2025
PHONE: Albert: 0419945950 Carol: 0404915320	SCALE: 1*100
EMAIL: albert@artforms.com.au carol@artforms.com.au	



Sand anchor - to be buried in the sand for the attachment of various artwork structures

STANDARD SAND ANCHOR DETAIL

***Please note:** It is customer's responsibility to check proof thoroughly as we will cut directly from this file. We make every effort to ensure parts are correct, however AWA cannot accept responsibility for parts with incorrect details if they are cut to an approved proof.



TITLE: Standard Sand Anchor

DRN: Artforms

CLIENT: Castaways

DATE: 02/08/2025

PHONE: Albert: 0419945950
Carol: 0404915320

EMAIL: albert@artforms.com.au
carol@artforms.com.au

SCALE:

CUSTOMER APPROVAL